

ProcessPower

High pressure pump units



High Pressure Technology

Table of contents

Our philosophy	4 5
Applications	6 7
Design options	8 9
EP 601	10
EP 602	10
P3-10	11
P4-20	12
Px-45	12
Px-70	13
Px-80	13
Px-96	14
P5-98	14
KD600	15
KD700	16 17
KD800	18
MPx	19
Our product range	20

Customer satisfaction due to highest availability and a maximum range of applications

Whether as a high pressure pump for descaling, as a process pump for CO₂ extraction, the residual oil recovery or as a pump for high-pressure cleaning: URACA pump units fulfill their duties tirelessly and reliably. Whether operated continuously or intermittently. The design of our products meets their intended uses - also in terms of materials and product choice. Based on our customised solutions URACA pump units achieve highest customer satisfaction at a maximum availability.

Top performance requires a strong heart

Industry standard

URACA plunger pumps are designed for uninterrupted heavy duty operation 24 hours a day – for decades.

Variety

The optimum pump of URACA's product family for each unit.

Quality

URACA high pressure plunger pumps are manufactured in-house considering the highest quality standards.

Know-how

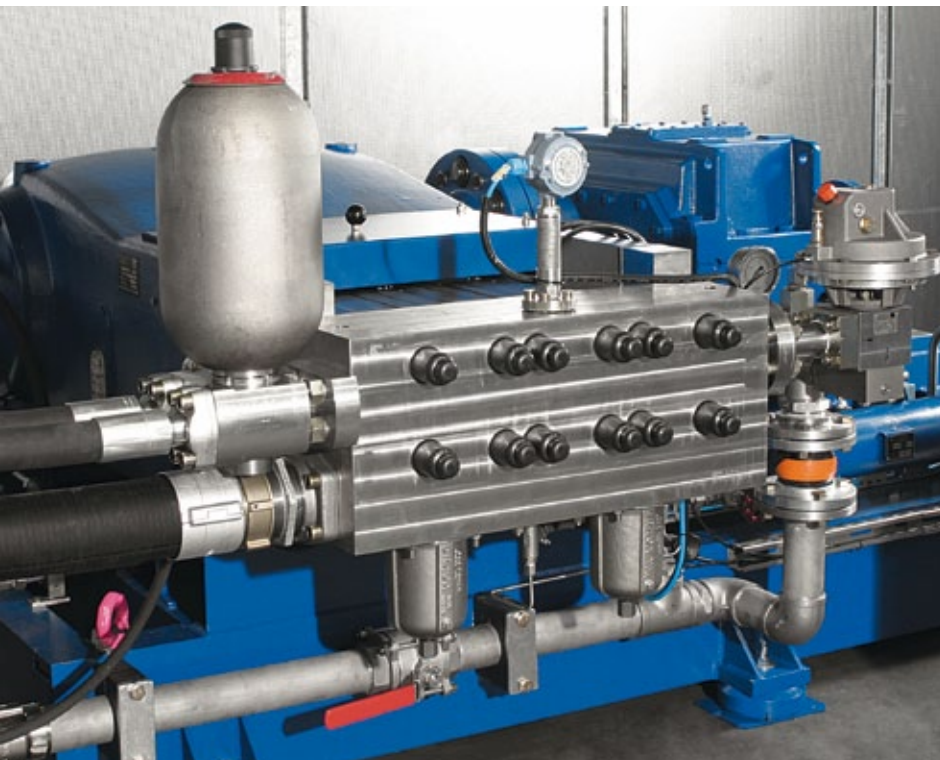
Since more than 120 years, URACA is manufacturing high pressure pumps.

Performance

Maximum pressure level and maximum flow rate. Not only on paper.

Energy efficiency

URACA products achieve highest efficiency. Cost-effective – year in and year out.



Quality without compromises

The daily, professional use is a tough challenge for a pump unit. Most important for top performance, endurance and highest economic efficiency of the ProcessPower range is the strong heart: The URACA high pressure plunger pump.

Our philosophy:
the **most reliable** units in the market.



Developed for the future

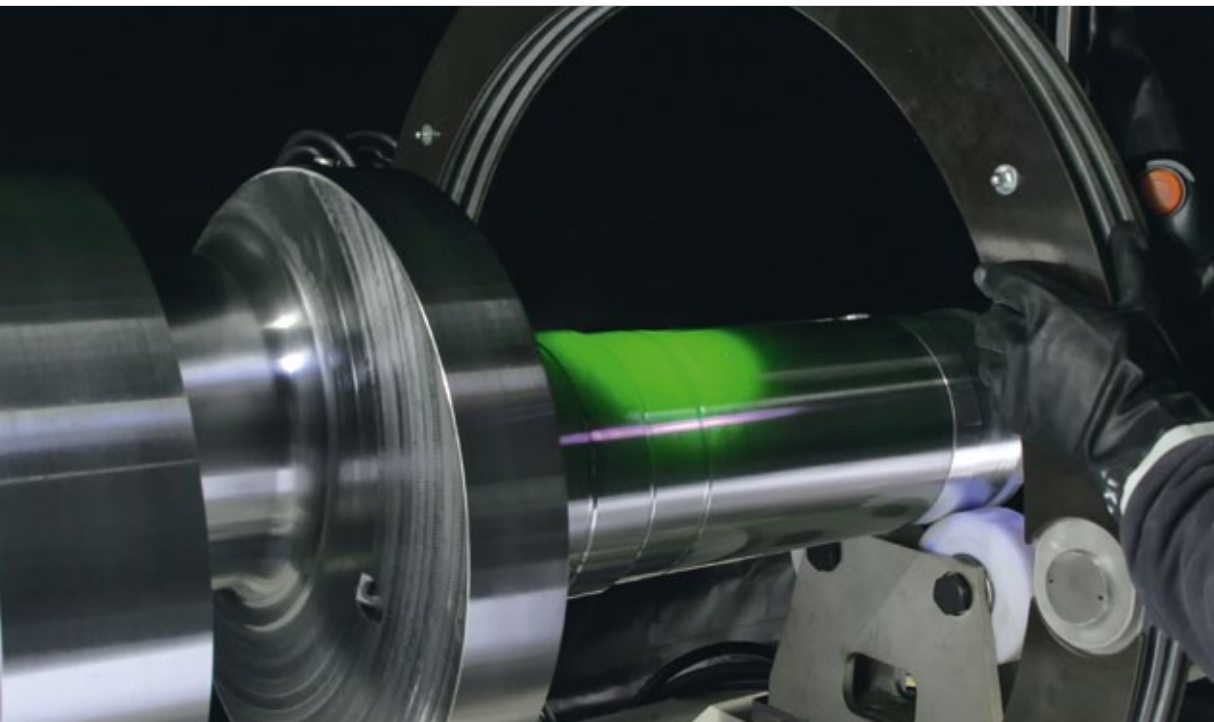
As a leading manufacturer in the field of high pressure technology URACA offers with the ProcessPower series electrically operated pump units with a wide range perfectly matched solutions for professional applications in industry and services. We do not invent superlatives on paper, but develop workhorses for practice. ProcessPower units are designed for maximum performance, efficient handling, durability and flexibility.

Proven under the toughest conditions

Electrically operated pump units of the series ProcessPower are in operation worldwide under the toughest conditions. ProcessPower units easily withstand dirt and dust, extremely high and low temperatures and especially heavy duty conditions that such machines are subject to. Countless testimonials from enthusiastic users confirm the durability of URACA units. You also can work with the best power units available.



ProcessPower units are used in the toughest system operation – here we are at home.



Indestructible pumps with high-quality components allow efficient running costs for the units.

Built for professionals

Design intelligence, the best plunger pumps as a basis, vertical integration up to crank shafts completely manufactured in-house, precise machining and careful assembling by qualified employees as well as extensive test procedures ensure the reliable functioning of our products. This offers the best possible economic efficiency and lasting value. Every day. For many years.

Our philosophy

- Over 120 years of experience
- Production “Made in Germany”
- Highest vertical integration
- Comprehensive engineering know-how
- In-house testing operation
- Customised solutions
- Excellent price-performance ratio
- Highest energy efficiency

The optimum **ProcessPower** high pressure pump unit for each application

Process technology



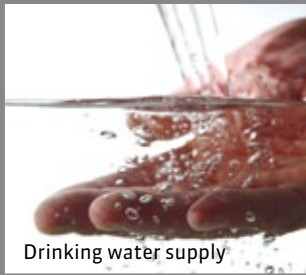
Water jet applications



Industrial technology



Descaling



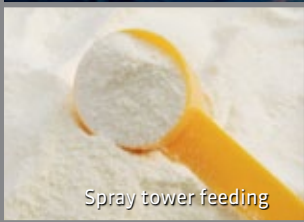
Drinking water supply



Press drives



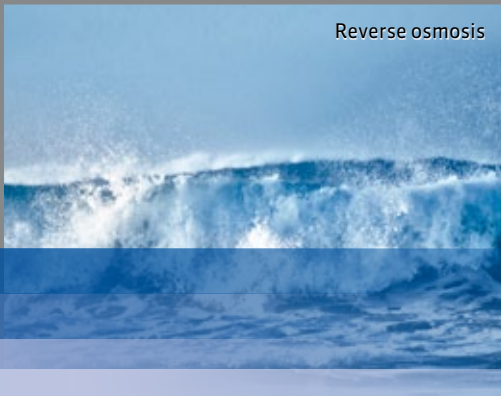
Hydrostatic bearing lubrication



Spray tower feeding



Spunlacing



Reverse osmosis



Pressure testing

High pressure cleaning



Tank and vessel cleaning



Parts cleaning



Cement mixer cleaning



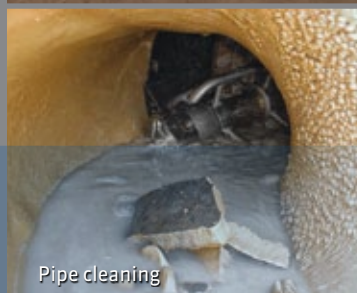
Sewer cleaning



Industrial cleaning



Tank wagon cleaning



Pipe cleaning



Heat exchanger cleaning

Powerful pump units for professional use

The varied range of electrically driven pump units from URACA provides the optimum solution for your application. URACA pump units are robust and powerful. Different power levels open up a wide application spectrum ranging from pressure testing to high-pressure cleaning and to continuous operation in the industry. For all liquids from water, hot water, solvents, to chemical and abrasive liquids. Customer-specific design of the URACA pump units facilitates maximum efficiency as well as the reliability you are used to.

URACA high pressure pump units

Drive power	from 1.5 up to 3,500 kW
Operating pressures	up to 3,000 bar

Our features

Your benefit

For URACA plunger pumps

Sophisticated pump design

- Less energy consumption due to high mechanical efficiency
- Low-wear operation

Inclined splitted¹⁾ power end casing

- Easy maintenance options

Integrated gear box¹⁾

- Compact design
- Small footprint

Tailor made liquid end

- Optimum volumetric efficiencies for almost all liquid fluids

Individually selected materials

- Highest resistance of all wetted parts
- Low wear and high availability

For URACA pump units

Compact design

- Small footprint

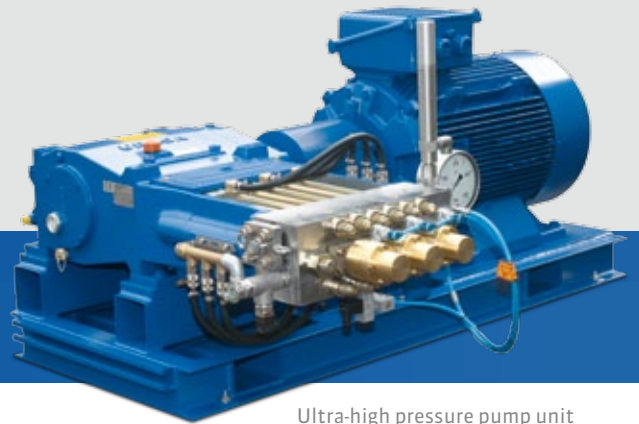
Modular construction of the unit

- Individual configuration options

Customised unit design

- Compliance with individual, national and international standards and norms

¹⁾ only for certain model ranges



Ultra-high pressure pump unit KD719 with suction valve release for fast and precise load changes

High-pressure pump unit KD724 for the oil and gas industry with pulsation damper, discharge sided ball resonator and lube oil system



Design options – maximum efficiency due to customised construction

Drive configuration

- Drive arrangement
- Pump arrangement
- Gear box/converter/belt/direct



Horizontal pump



Vertical pump



Design: right



Design: left



With gear box



Without gear box

Design options

- stationary/mobile
- with/without noise protection
- open/in container/in frame
- ATEX conform design



Mobile



Stationary



Noise protection



Container installation

Pump configurations and types

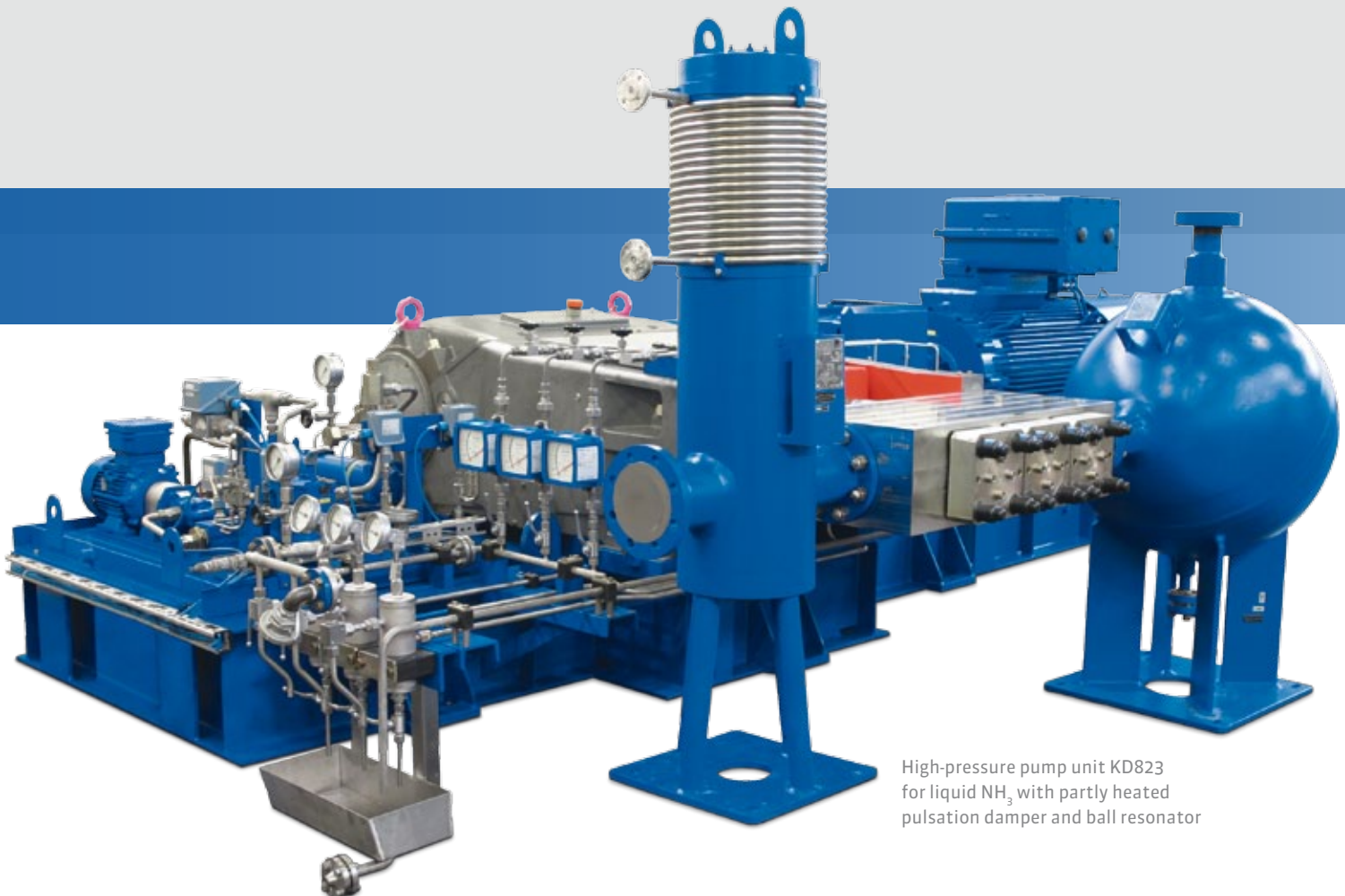
- Liquid end designs, valve designs
- Material selection
- Accessories
- Pulsation damping
- Injection units



Ex-control



Suction valve release



High-pressure pump unit KD823 for liquid NH₃ with partly heated pulsation damper and ball resonator

ProcessPower EP601



Test unit EP601 in protection and transport frame. Stationary and mobile.



	EP601 W/100	EP601 D/200
Drive power pump unit	1.5 kW	3 kW
Pressure max.	100 bar	200 bar
Flow rate max.	5 l/min at 5 bar 5 l/min at 100 bar	5 l/min at 5 bar 5 l/min at 200 bar
Weight	37 kg	44 kg
Dimensions	775 x 400 x 350 mm	775 x 400 x 350 mm

ProcessPower EP602



Mobile pressure test unit EP602

The new series of electrically-powered test pump units offers a wide range of applications. The pump units are used for hydrostatic pressure testing of all types of components, pipes, pipelines, vessels, cylinders and pressurized installations. Universal use in the plumbing, heating, solar and sprinkler installation, compressed air systems, steam and cooling systems, oil installations, as well as hydraulic systems for boilers, pressure vessels and fittings as well as on construction sites. Functional and ergonomic handling are outstanding features of these compact and reliable pump units.

	EP602 D/200	EP602 D/350	EP602 D/500
Drive power pump unit	11 kW	11 kW	11 kW
Pressure max.	200 bar	350 bar	500 bar
Flow rate max.	30 l/min at 20 bar 30 l/min at 200 bar	15 l/min at 20 bar 15 l/min at 350 bar	10 l/min at 20 bar 10 l/min at 500 bar
Weight	114 kg	114 kg	119 kg
Dimensions	1,265 x 565 x 1,000 mm	1,265 x 565 x 1,000 mm	1,265 x 565 x 1,000 mm

ProcessPower P3-10

High-pressure pump units for all cleaning and pressure testing jobs mainly for industrial use. The heart is our “small but powerful” pump P3-10. Models for explosion-proof, mobile and stationary types, with and without noise insulation covers are available.



High-pressure cleaning unit P3-10 liquid end in stainless steel and ATEX design

	P3-10
Drive power pump	38 kW
Pressure max.	1,000 bar
Flow rate max.	163 l/min at 125 bar 20 l/min at 1,000 bar
Weight	500 kg
Dimensions	1,200 x 800 x 1,000 mm



Mobile pressure testing unit P3-10 with hose reel



Stationary pressure testing unit P3-10 with speed regulation and feed tank

ProcessPower P4-20

The ideal pump unit, for example, for the supply of drinking water in pumping stations. The high hydraulic and mechanical efficiency of the pump ensures energy-efficient operation of the plant.

	P4-20
Drive power pump	75 kW
Pressure max.	100 bar
Flow rate max.	652 l/min at 60 bar 398 l/min at 100 bar
Weight	1,500 kg
Dimensions	2,500 x 1,000 x 1,000 mm



High-pressure pump unit P4-20 for drinking water supply in the pumping station

ProcessPower Px-45

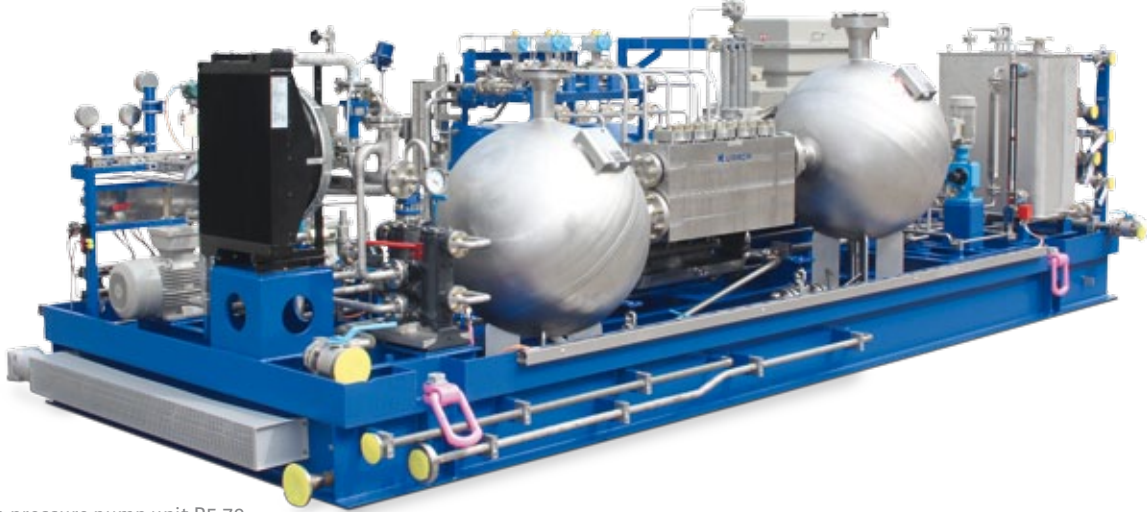
The pump units for high flow rates. Proven for industrial cleaning tasks, for example in malting plants or power stations.

	P3-45	P4-45
Drive power pump	135 kW	180 kW
Pressure max.	250 bar	250 bar
Flow rate max.	483 l/min at 150 bar 292 l/min at 250 bar	645 l/min at 150 bar 389 l/min at 250 bar
Weight	1,500 kg	2,000 kg
Dimensions	2,500 x 1,300 x 1,600 mm	2,600 x 1,300 x 1,600 mm



High-pressure pump unit P3-45 for cleaning tasks with high flow rates.

ProcessPower Px-70

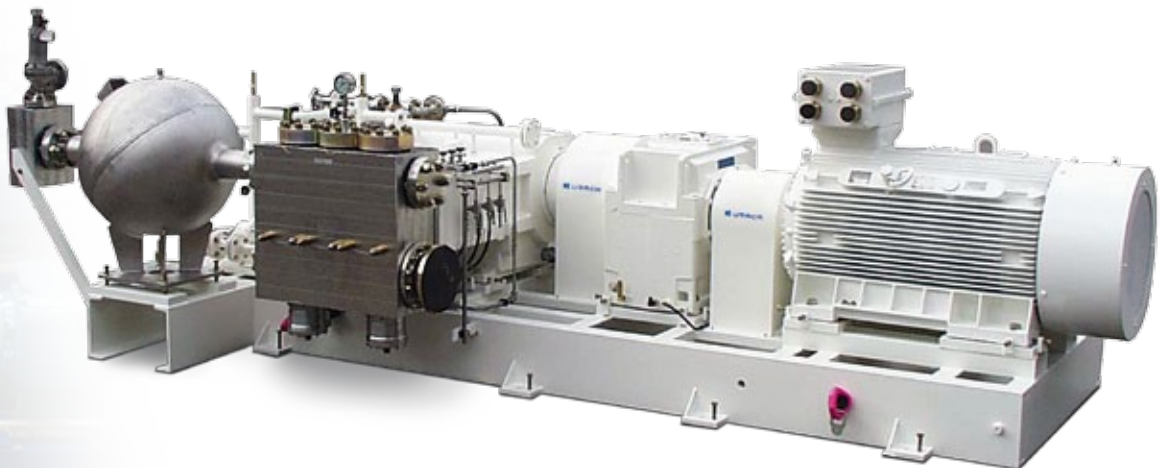


High-pressure pump unit P5-70 with suction and discharge sided resonators and lube oil system

The highly reliable pump units of the Px-70 and Px-80 series have been developed in line with latest design features. Particularly suitable for industrial use, especially in continuous operation.

	P3-70	P4-70	P5-70
Drive power pump	330 kW	440 kW	550 kW
Pressure max.	2,800 bar	2,800 bar	2,800 bar
Flow rate max.	910 l/min at 195 bar 42 l/min at 2,800 bar	975 l/min at 250 bar 56 l/min at 2,800 bar	1,220 l/min at 250 bar 70 l/min at 2,800 bar
Weight	5,000 kg	5,500 kg	6,000 kg
Dimensions	2,700x1,800x1,200 mm	2,700x1,800x1,200 mm	3,000x1,800x1,200 mm

ProcessPower Px-80



	P3-80	P5-80
Drive power pump	680 kW	1,150 kW
Pressure max.	1,600 bar	1,600 bar
Flow rate max.	3,800 l/min at 100 bar 220 l/min at 1,600 bar	6,300 l/min at 100 bar 340 l/min at 1,600 bar
Weight	11,000 kg	18,000 kg
Dimensions	3,300x2,500x1,500 mm	4,000x2,500x1,500 mm

High-pressure pump unit P3-80 with integrated suction sided pulsation dampers and discharge sided ball resonator

ProcessPower Px-96 / P5-98



High-pressure pump unit P3-96 with additional injection pump and lube oil system

	P3-96	P5-96
Drive power pump	2,100 kW	2,600 kW
Pressure max.	480 bar	360 bar
Flow rate max.	6,600 l/min at 170 bar 2,400 l/min at 480 bar	10,970 l/min at 130 bar 3,900 l/min at 360 bar
Weight	35,000 kg	90,000 kg
Dimensions	8,500x6,600x6,500 mm	9,700x6,600x6,500 mm

	P5-98
Drive power pump	3,500 kW
Pressure max.	480 bar
Flow rate max.	11,100 l/min at 170 bar 3,900 l/min at 480 bar
Weight	90,000 kg
Dimensions	9,700x6,600x6,500 mm

Extremely powerful industrial pump units for maximum load requirements for special applications. For handling of low viscosity to pasty, neutral or aggressive, abrasive, very hot or toxic media in continuous operation with high availability. Examples: coal slurry, residual oils, ammonia and carbamate.



High-pressure pump units P5-96 and P3-96 for coal slurry



ProcessPower KD600

Powerful industrial pump units for standard applications such as descaling or spunlacing as well as in customised design for almost all process applications.



High-pressure pump unit KD626
on base frame

	KD626	KD629
Drive power pump	300 kW	570 kW
Pressure max.	800 bar	1,160 bar
Flow rate max.	1,019 l/min at 165 bar 180 l/min at 800 bar	2,005 l/min at 160 bar 266 l/min at 1,160 bar
Weight	7,000 kg	10,000 kg
Dimensions	3,000 x 2,000 x 1,500 mm	3,300 x 2,500 x 1,500 mm



High-pressure pump unit KD629 with resonator on discharge side and integrated pulsation dampers for spunlacing



High-pressure pump unit KD629
with lube oil system

ProcessPower KD700

High-pressure pump units with the optimum power range for a whole variety of applications of high pressure cleaning up to oleochemicals, hydrostatic bearing lubrication and injection. Most suitable for continuous operation and industrial use under extreme loads.



High-pressure pump unit KD724 on base frame with suction and discharge sided pulsation dampers

	KD708	KD719	KD724	KD725
Drive power pump	75 kW	110 kW	170 kW	270 kW
Pressure max.	1,200 bar	2,800 bar	3,000 bar	2,800 bar
Flow rate max.	295 l/min at 135 bar 30 l/min at 1,200 bar	432 l/min at 125 bar 14.7 l/min at 2,800 bar	615 l/min at 130 bar 20 l/min at 3,000 bar	715 l/min at 200 bar 34 l/min at 2,800 bar
Weight	1,200 kg	1,300 kg	3,000 kg	3,500 kg
Dimensions	1,900x1,300x900 mm	1,900x1,300x900 mm	2,500x1,700x1,200 mm	2,700x1,800x1,200 mm



High-pressure pump unit KD724 with suction valve release for fast and accurate load changes as well as sensors for operating data logging



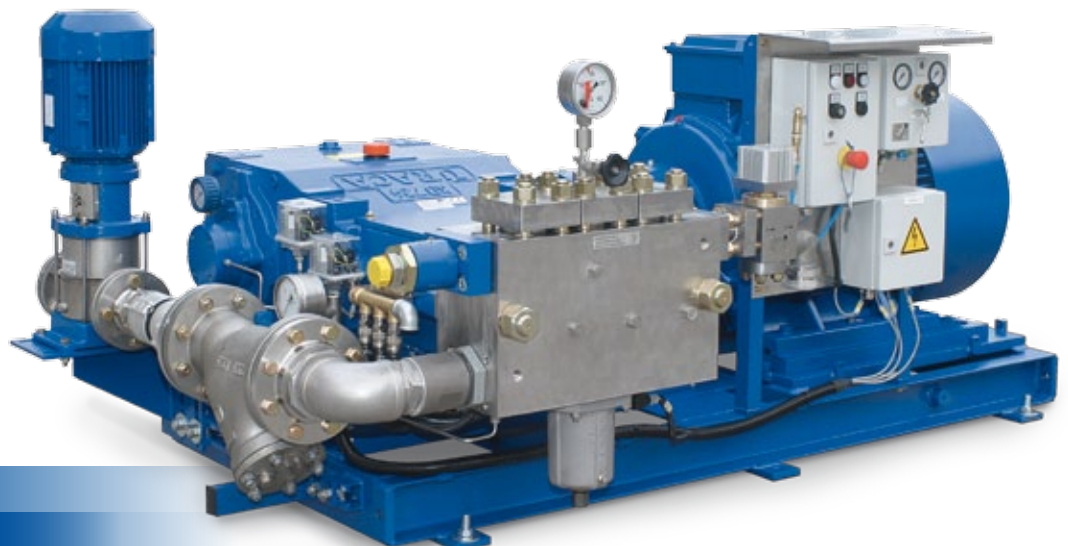
High-pressure pump unit KD719 with belt-drive



High-pressure pump unit KD719
on base frame according to ATEX



High-pressure pump unit KD708
according to ATEX with hose reel



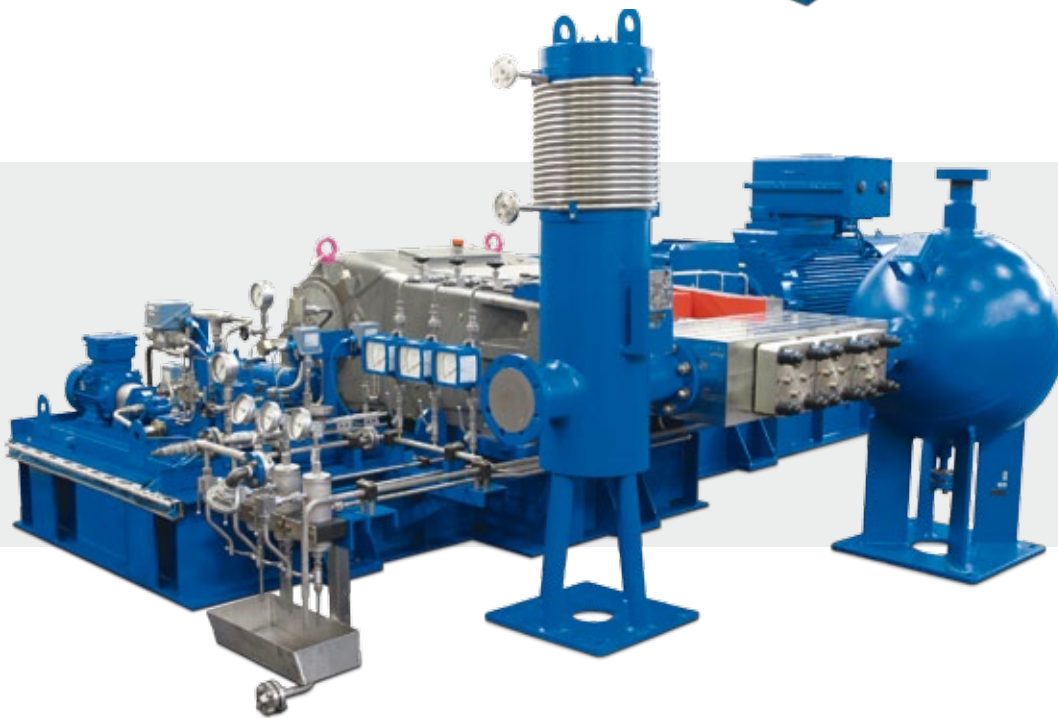
High-pressure pump unit
KD724 with booster pump

ProcessPower KD800

The indestructible, highly reliable pump units of the KD800 series are characterised by their robust construction. The slowly running pumps are particularly suitable for continuous heavy duty operation.



High-pressure pump unit KD821 for fatty acid with catalyst and additional injection pump



High-pressure pump unit KD823 for liquid NH₃ with partly heated pulsation damper, discharge ball resonator and lube oil system

	KD821	KD822	KD823	KD825	KD827
Drive power pump	260 kW	450 kW	650 kW	1,200 kW	2,000 kW
Pressure max.	820 bar	820 bar	820 bar	675 bar	650 bar
Flow rate max.	1,160 l/min at 110 bar 155 l/min at 820 bar	2,080 l/min at 110 bar 260 l/min at 820 bar	3,248 l/min at 100 bar 392 l/min at 820 bar	4,550 l/min at 130 bar 840 l/min at 675 bar	4,988 l/min at 130 bar 1,470 l/min at 650 bar
Weight	4,000 kg	4,500 kg	8,500 kg	15,000 kg	24,000 kg
Dimensions	4,500x3,000x2,000 mm	5,200x3,500x2,000 mm	5,500x3,800x2,000 mm	6,000x4,000x2,200 mm	6,500x4,500x2,300 mm

High-pressure pump unit KD823 for residue oil with injection pump, sealing oil supply and lube oil system



ProcessPower MPx



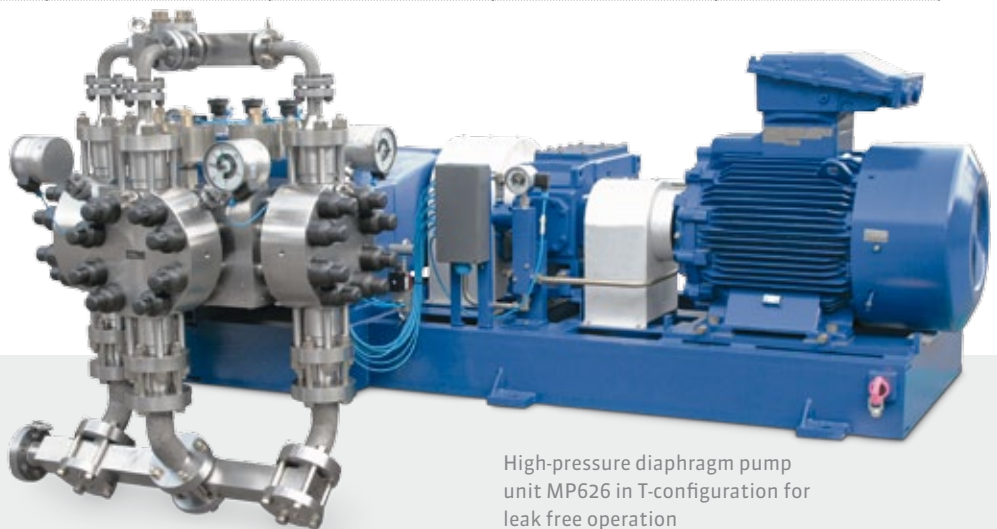
Hermetic high-pressure pump unit MP626 for toxic media

Diaphragm pump units are a contribution to the safe handling of hazardous fluids and the reliability of the production line. Hermetic displacement pumps are preferably used for toxic, explosive, corrosive, foul-smelling, environmentally hazardous or abrasive fluids. Diaphragm pumps offer the benefits of almost wear free piston seals and leak free operation. The liquid-end in a T-configuration provides a uniquely favourable size ratio, which is barely larger than that of a classical triplex plunger pump.

	MP708	MP719	MP724	MP626	MP629
Drive power pump	12.5 kW	25 kW	50 kW	100 kW	250 kW
Pressure max.	350 bar	350 bar	350 bar	350 bar	350 bar
Flow rate max.	40 l/min at 130 bar 13 l/min at 350 bar	95 l/min at 115 bar 30 l/min at 350 bar	220 l/min at 115 bar 68 l/min at 350 bar	385 l/min at 130 bar 120 l/min at 350 bar	850 l/min at 120 bar 250 l/min at 350 bar
Weight	1,100 kg	1,500 kg	3,000 kg	4,600 kg	10,500 kg
Dimensions	2,100x1,300x1,100 mm	1,900x1,600x1,400 mm	2,500x1,900x1,200 mm	2,900x2,300x1,500 mm	5,300x2,700x1,800 mm



Diaphragm pump unit MP719 with vertical motor



High-pressure diaphragm pump unit MP626 in T-configuration for leak free operation

URACA – professional **high pressure** system supplier



Products and services



— Pump units

Unit assembly and drives at your convenience in stationary or mobile design. Whether in container, on skid or on trailer.

- Electrically driven units
- Engine driven units
- Hydraulically driven units
- Tailor made pump control systems

— Pumps

The core of the URACA technology: Superior quality, powerful high pressure positive displacement pumps, also for high-demanding continuous use. URACA pumps are designed acc. to API 674 on demand.

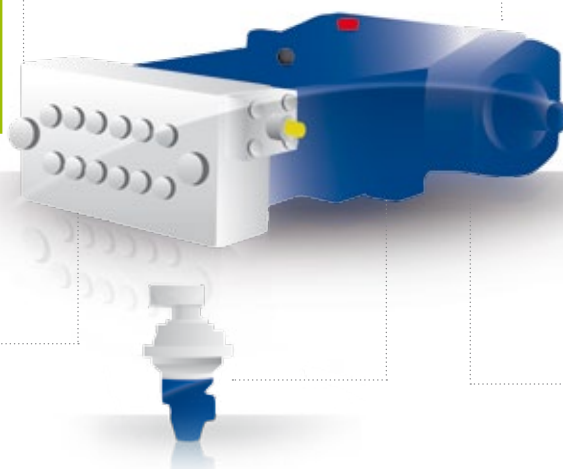
- Process and industrial pumps – reciprocating plunger pump or diaphragm design
- Test pumps
- High pressure water jetting pumps
- Sewer cleaning pumps



— High pressure water jetting systems

URACA gathered a lot of experience and engineering competence in the field of water jetting. URACA designs and manufactures complete systems, from simple cleaning head positioning devices up to semi-automatic and automatic operated systems for

- Reactor and vessel cleaning
- Pipe and tube cleaning
- Surface conditioning
- And others – just give us your request!



— Tools

URACA manufactures a wide range of cleaning tools for any application.

- Spray guns
- Tank cleaning heads
- Sewer cleaning nozzles
- Rotating nozzles
- Floor cleaners

— Accessories and components

URACA's pump range is completed with a wide range of high pressure accessories and components, like

- Nozzles
- Remote controls
- Hoses
- High pressure valves
- 90 degree rotary joint
- Multi-consumer systems
- Resonators and pulsation dampers



— Service

After sales service is URACA's top priority. The qualified and specially trained personnel and technicians are prepared to support you at any time, whether for

- Spare parts
 - Revamps
 - Upgrades in case of changed process conditions
 - Training
 - Supervising
 - Or answers to any questions you may have in terms of URACA equipment
- Please do not hesitate to contact us!