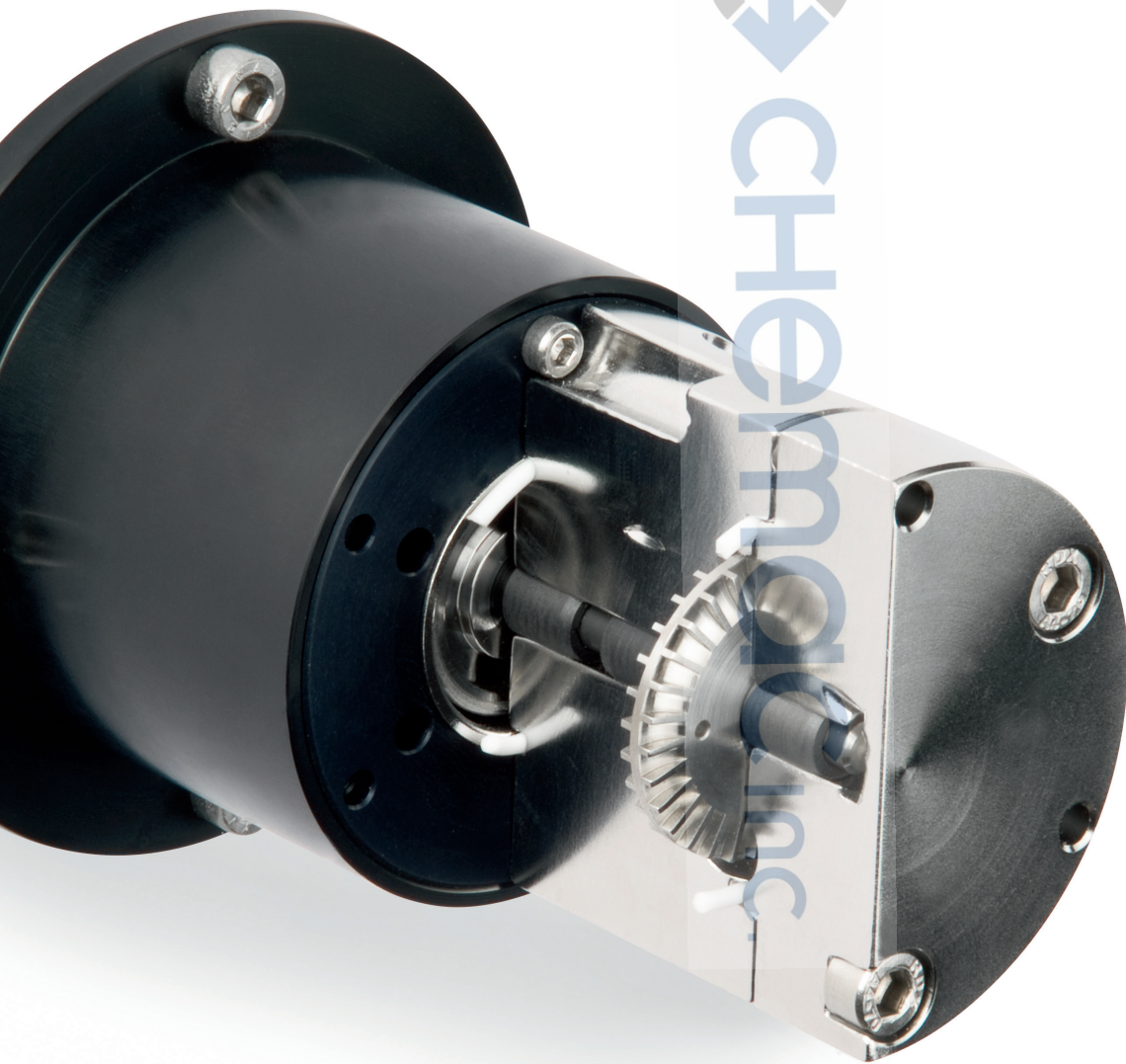


Mini Centrifugal Pump

The Magnetic Drive Process Pump



The Mini Centrifugal Pump

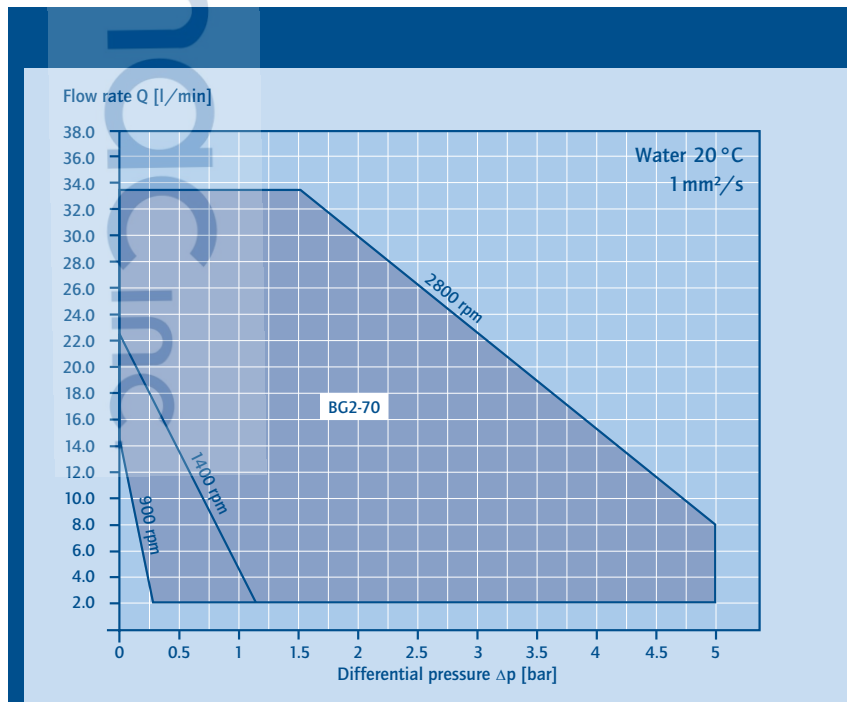
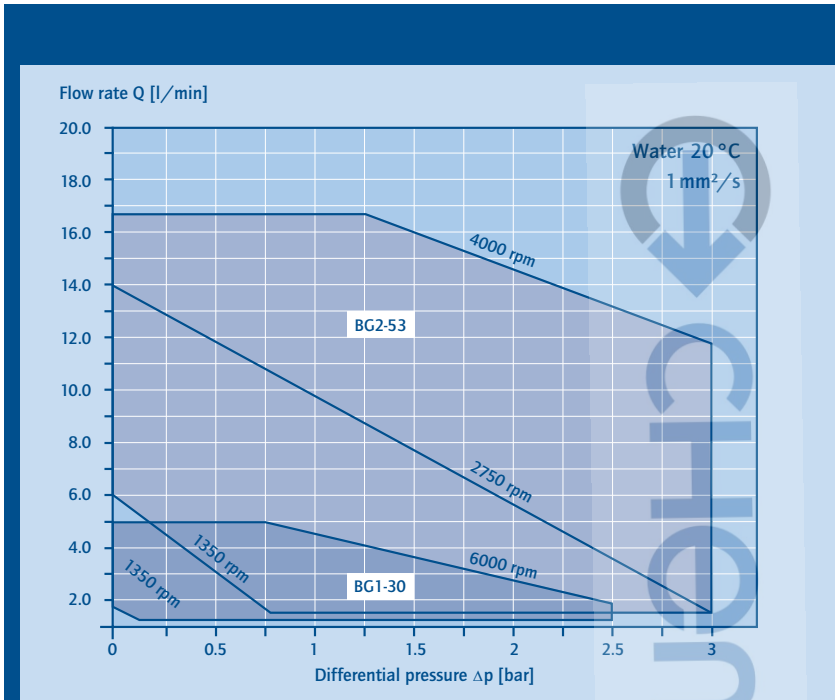
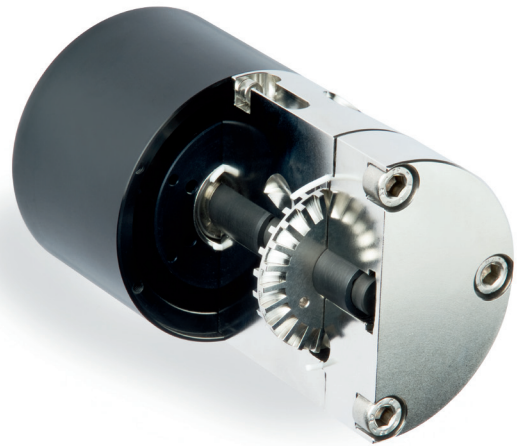
A Magnetic Drive Process Pump



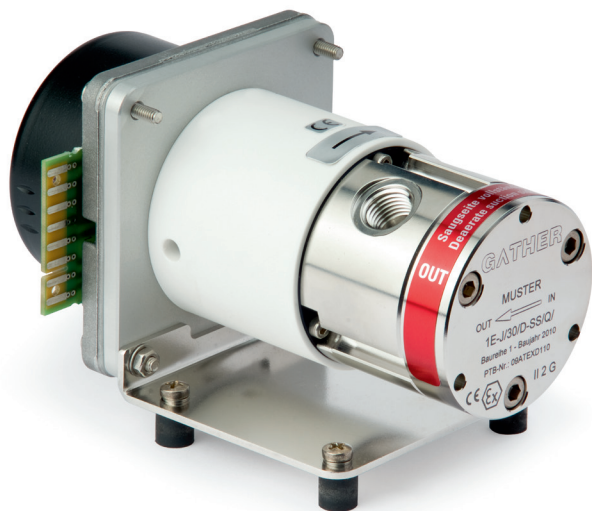
This magnetically coupled mini process pump from GATHER Industrie GmbH is a modern process pump for the pulsation-free metering, pumping and circulation of water, salt solutions, acids, alkalis and solvents. The delivery rate is adjustable both by metering valve and frequency converter.

Its combination of robust, proven journal bearing technology (including efficient cooling/liquid circulation) and the maintenance-free, hermetically sealed magnetic coupling from the GATHER gear pump in a simple centrifugal pump design creates a low-cost, sturdy, reliable and safe multi-purpose pump.

Characteristics of the Mini Centrifugal Pump



Specifications of the Mini Centrifugal Pump



Materials	Stainless steel, Hastelloy, Titanium and special alloys
Liquids	Non-lubricating and lubricating liquids
Viscosity	$\nu = 0.3 \text{ mm}^2/\text{s}$ to $100 \text{ mm}^2/\text{s}$ or from $99 \text{ }^\circ\text{C}$ hot water up to sodium hydroxide (50%)
Capacities/Pressure (see Characteristics)	
Series 1:	20 - 300 l/h up to 2.5 bar
Series 2:	60 - 1,000 l/h up to 3.0 bar 120 - 2,000 l/h up to 5.0 bar
Temperature	$T = -5 \text{ }^\circ\text{C}$ to $+100 \text{ }^\circ\text{C}$ (as special version: $-60 \text{ }^\circ\text{C}$ up to $+350 \text{ }^\circ\text{C}$)
Explosion Classes	Zones 1, 2 and 22, Temperature classes T1...T6 or 100 K above the glow temperature of the dust (Zone 22)
Cleaning	Cleaning in Place (CIP)

Advantages

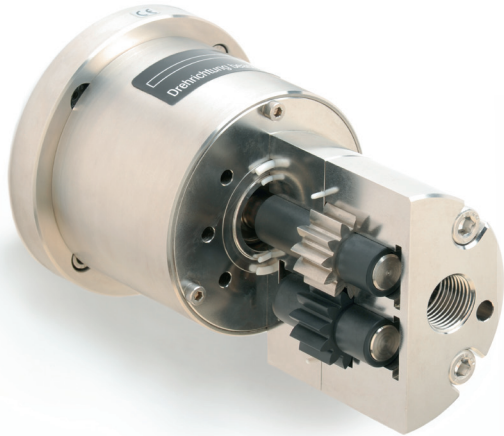
- inexpensive
- hermetically sealed
- multifunctional
- safe and quiet
- maintenance-free*
- pulsation-free

**limited to wear and tear*

The noise emitted by the GATHER mini centrifugal pump is virtually confined to the noise of the motor. The pump naturally meets the ATEX requirements for Zones 1, 2 and 22.

The pump heads of the mini centrifugal pump possess the same magnet system as GATHER gear pump heads, so they can be operated on all drive units with the same magnet type.

The GATHER Products



Gear Pump and Wankel Pump

GATHER magnetic drive gear pumps are designed for dosing as well as process pump operations. They are complemented by Wankel (rotary piston) pumps featuring excellent conveying and pressurizing performance. The distinctive mark of these hermetically sealed pumps is long service life and non-pulsation dosing, especially of non-lubricating liquid such as water, salt solutions and solvents but also of acid and caustic solutions.

NEW

Temperature range:
-200 °C to +450 °C



Quick-Disconnect Couplings

The safe, robust and quickly disconnectable hose/tube joining method for almost any liquid and gaseous media. With double or single shutoff function or unrestricted medium passage in sizes ranging between DN 4 and DN 125. The original Hansen couplings and the flat-face, non-leakage couplings of GATHER's own DBG series are especially versatile.

NEW

Temperature range:
-80 °C to +325 °C



Filters and Valves

For dosing performance enhancement and gear pump protection GATHER offers tailored accessories: High-grade overflow valves and filters of stainless steel and Hastelloy as well as simple non-return valves.

high-grade, robust

GATHER

INDUSTRIE

Quality – Made in Germany

Competence from the specialists:
Personal engineering consultation
in-house and in the field

GATHER Industrie GmbH

Auf dem Hüls 14-18
D-40822 Mettmann
Phone: +49(0) 21 04/77 07-0
www.gather-industrie.de

Pump Technology/Filters and Valves

Phone: +49(0) 21 04/77 07-23
Fax: +49(0) 21 04/77 07-60
pumpe@gather-industrie.de

Coupling Technology

Phone: +49(0) 21 04/77 07-30
Fax: +49(0) 21 04/77 07-50
kupplung@gather-industrie.de



CHEMAC

