



123 Pleasant Ave. | Upper Saddle River, NJ 07458 | USA
Toll Free. 1-800-217-3677 | Tel. 1-201-934-3300
Web. www.chemacinc.com | Email. Chemac@chemacinc.com



JetPower

High pressure pump unit



Table of contents

Our promise	4 5
References	6 7
Overview	8 9
JetPower 125	10
JetPower 180	12
JetPower 300	14
JetPower 480	16
JetPower 600	18
Our programme	20

Dockyards in Estonia

Repair and maintenance of ships incur high costs and have to run smoothly. Ships are subject to a high level of wear – salt water and growth weaken the surfaces and regular repair is inevitable. The time spent in the docks has to be kept as short as possible, though, which represents an enormous challenge considering the huge surface areas of 40 – 50000 square metres. For this reason the repair specialists at the dockyards in Estonia require the best high pressure devices with the highest level of reliability and maximum endurance. They have found them at URACA.

Top performance requires a strong heart

Industry standard

URACA plunger pumps are designed for uninterrupted heavy duty operation 24 hours a day – for decades.

Variety

The optimum pump of URACA's product family for each unit.

Quality

URACA high pressure plunger pumps are manufactured in-house considering the highest quality standards.

Know-how

Since more than 120 years, URACA is manufacturing high pressure pumps.

Performance

Maximum pressure level and maximum flow rate. Not only on paper.

Energy efficiency

URACA products achieve highest efficiency. Cost-effective – year in and year out.



Quality without compromises

Water jet cleaning with up to 3000 bar in daily professional use is a tough challenge for a cleaning unit. The powerful heart of the JetPower range is crucial for performance and endurance and therefore also for economic efficiency: The URACA high pressure plunger pump.

Our philosophy:
the most **reliable units** in the market.



Developed for the future

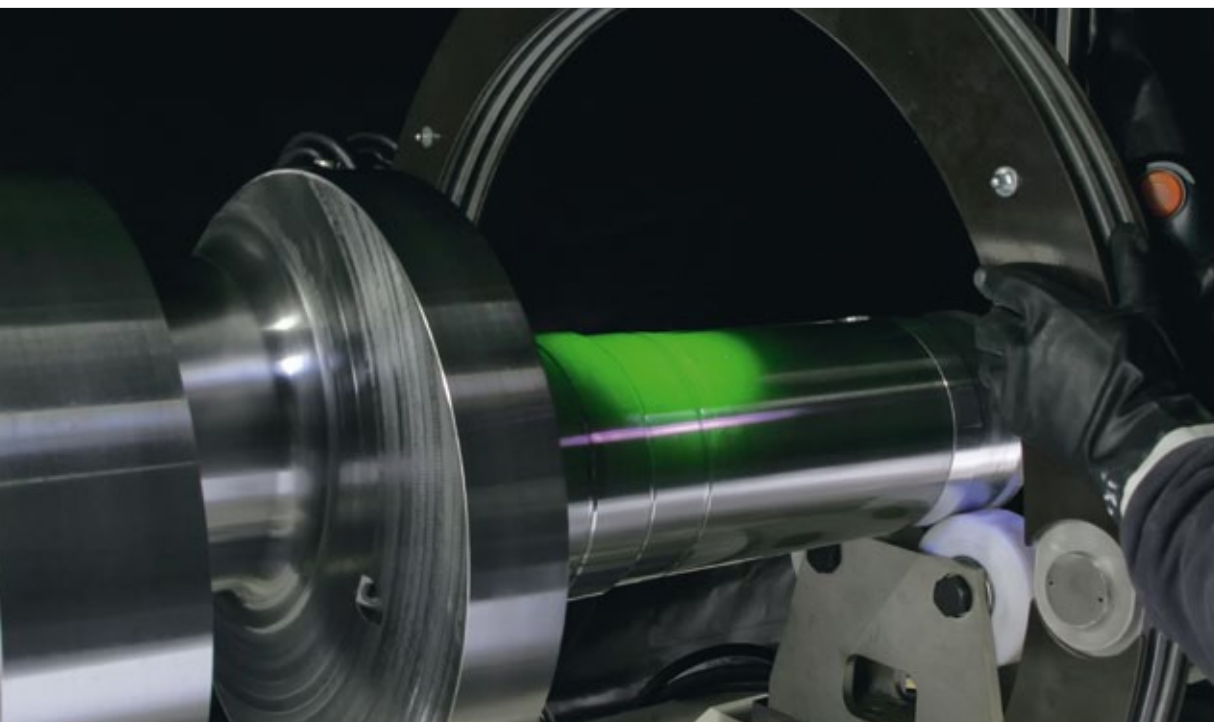
As a leading manufacturer in the field of high pressure water jet technology, URACA offers with the JetPower series diesel-operated pump units with a wide range perfectly matched solutions for professional cleaning. We do not invent superlatives on paper, but develop workhorses for practice. JetPower units are designed for maximum performance, efficient handling, durability and flexibility.

Proven under the toughest conditions

Diesel-operated pump units of the series JetPower are in operation worldwide under the toughest conditions. JetPower units easily withstand dirt and dust, extremely high and low temperatures and especially heavy duty conditions that such machines are subject to. Countless testimonials from enthusiastic users confirm the durability of URACA units. You also can work with the best power units available.



URACA power units in rough construction site applications – here we are at home.



Indestructible pumps with high-quality components allow efficient running costs for the units.

Built for professionals

Design intelligence, the best plunger pumps as a basis, vertical integration up to crank shafts completely manufactured in-house, precise machining and careful assembling by qualified employees as well as extensive test procedures ensure the reliable functioning of our products. This offers the best possible economic efficiency and lasting value. Every day. For many years.

Our promise

- Over 120 years of experience
- Production “Made in Germany”
- Highest vertical integration
- Comprehensive engineering know-how
- In-house testing operation
- Customised solution
- Excellent price-performance ratio
- Highest energy efficiency

True **quality** is revealed in continuous professional operation

“A challenge which Wannenwetsch were able to take on thanks to innovative equipment and experienced employees.”

Day after day, 70000 cars drive across the Felper bridge of the Brenner autobahn. A sealant had to be applied to this bridge during renovation – while traffic continued in both directions.

Within the shortest time possible the renovation experts removed the far ends of

the cantilever plates using several URACA high pressure units and state-of-the-art robot technology. This was carried out smoothly, cleanly and without vibrations using a drive performance of 2x 450 kW.

Christian Herda,
Managing director

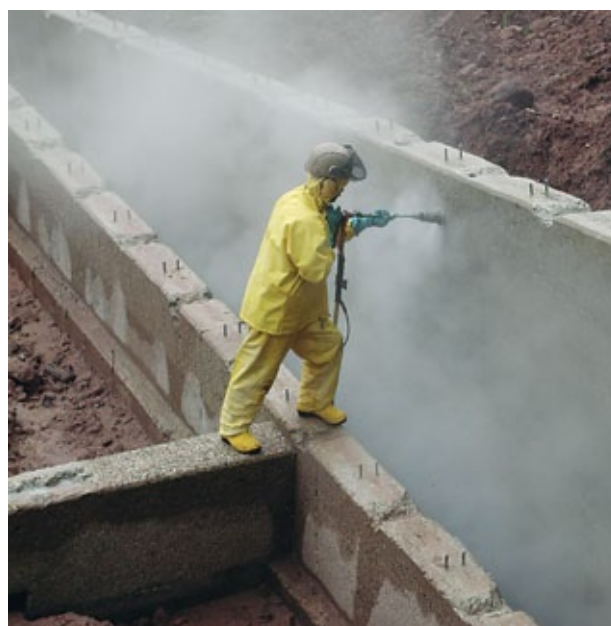
Wannenwetsch
HOCHDRUCKWASSESTECHNIK



Maintenance of parking garages, bridges or buildings is a highly responsible task as the static equilibrium of the objects to be refurbished has to be reinstated. For a professional solution to this demanding challenge, Saan Wasserstrahltechnik GmbH use URACA tools and high pressure pump units for the delicate removal of concrete. JetPower 180 units are the strong and reliable basis for carrying out these manual tasks with economic efficiency.

Reinhard Sauter,
Managing director

SAAN
Wasserstrahltechnik GmbH



Road markings should last forever. This makes it even more difficult when they have to disappear again. The same applies to the rubber residue which was burnt into the asphalt of runways by hundreds of aeroplanes. DAC Waterblasting services cc is a South African company which specialises in renovation preparation of surfaces, removal of road markings and removal of rubber from airport runways.

Das Entfernen von “Removing road markings and rubber from asphalt surfaces is a tricky task, that requires utmost care so as not to damage the underlying layer during the cleaning process”

The high pressure water jet method is the least abrasive and most productive system for removing paint and rubber residue. DAC Waterblasting services cc use URACA pump units which have proven to be very efficient and reliable for this.

Roberto Marinelli,
Operations manager



Refurbishing grand buildings is always a great responsibility. Cleaning the facade of “Bratislava castle” in the Slovak Republic involved the economically efficient cleaning of large areas (over 10500 m²) as well as the extremely careful treatment of the delicate facades to preserve as much substance as possible. Using hand-held spray guns and optimum control from URACA JetPower 125 units, AQUACLEAN were able to remove the surface little by little to create a perfect basis for the renovation. The work was completed in a highly efficient, economical and – most importantly – absolutely reliable way to the full satisfaction of the customer.

Zdenko Krajny,
Managing director



The optimum **JetPower**
high pressure unit for each application

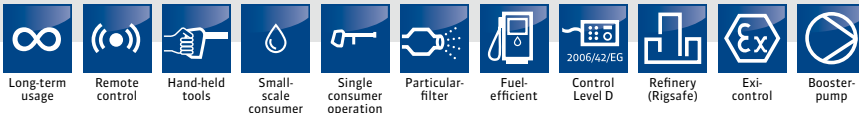
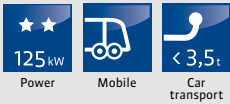


Application areas for JetPower			125	180	300	480	600
Casting core removal	l	Manual core removal with hand-held spray gun/spray lance	■	■	□	■	■
	m	Core removal with mechanically supported nozzle device	■	■	□	■	■
	s	Industrial core removal with robot-guided cleaning heads	□	□	□	□	□
High pressure cleaning	l	High pressure cleaning with hand-held spray gun/spray lance	■	■	□	■	■
	m	High pressure cleaning with mechanically secured, hand-held tools	■	■	■	■	■
	s	High pressure cleaning with robots, mechanically guided tools	■	□	■	■	■
Water jet cutting	l	Cutting with hand-held tools	■	□	■	■	■
	m	Cutting with mechanically secured cutting equipment	■	□	■	■	■
	s	Industrial cutting in continuous operation	□	□	■	■	■
Internal/external container and vessel cleaning	l	Cleaning of smaller containers	■	■	□	□	■
	m	Cleaning of containers with medium to large diameters	□	■	■	■	■
	s	Cleaning of containers with very large diameters	■	□	■	■	■
Cleaning/removal of road markings	l	Cleaning/removal of markings from smaller areas by hand-held spray gun/spray lance	■	■	■	□	□
	m	Cleaning/removal of markings from smaller to medium-sized areas with hand-held surface cleaning device	■	□	■	□	□
	s	Cleaning/removal of markings from large to very large areas with large cleaning machines	□	■	■	■	■
Rubber removal	l	Rubber removal from smaller areas with hand-held tools (spray gun/spray lance)	■	■	■	■	■
	m	Rubber removal from smaller to medium-sized areas with hand-held surface cleaning device	■	■	□	■	■
	s	Rubber removal from large to very large areas with large cleaning machines	■	■	■	■	■
Concrete demolition	l	Removal, surface treatment of smaller areas with hand-held tools	■	■	□	■	■
	m	Removal, surface treatment of medium-sized areas with mechanically guided and hand-held tools	■	■	□	■	■
	s	Removal, surface treatment of large areas with mechanically guided tools (e.g. removal robots)	■	□	■	■	■
Pipe cleaning	l	Cleaning pipes with smaller to medium diameter and small to medium length	■	■	■	■	■
	m	Cleaning pipes with large diameter and long length	■	□	■	■	■
	s	Cleaning pipes with very large diameter and long length	■	□	■	■	■
Well cleaning	l	Cleaning with hand-held tools (spray gun/Spray lance, surface cleaner)	■	□	■	■	■
	m	Cleaning with rotating nozzles	■	■	□	■	■
	s	Renovation with hose reels and rotary feedthrough units, RWK, TWK and rotating 2D nozzles	■	■	□	■	■
Heat exchanger cleaning	l	Cleaning with hand-held lances/tools	■	□	■	■	■
	m	Cleaning with mechanically secured lances/tools	■	■	■	■	■
	s	Cleaning with multiple lances/lance machines	■	□	■	■	■
Component cleaning	l	Cleaning with hand-held tools (spray gun/spray lance)	■	■	□	■	■
	m	High pressure cleaning with mechanically secured hand-held tools	■	■	□	■	■
	s	High pressure cleaning with robots, mechanically guided tools	■	■	■	□	□
Machine cleaning	l	Cleaning with hand-held tools (spray gun/spray lance)	■	■	□	■	■
	m	High pressure cleaning with mechanically secured hand-held tools	■	■	□	■	■
	s	High pressure cleaning with robots, mechanically guided tools	■	■	■	□	□

l = light m = medium s = severe

■ = ideally suitable □ = suitable ■ = limited suitable

JetPower 125

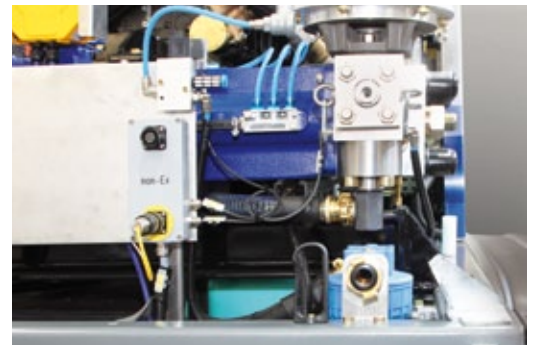


JetPower 125	
Pump type	KD716-GK
Standard pressure stages	800/1,000/1,200/1,600/ 2,000/2,800 bar
Flow rate	69 l/min bei 800 bar 54 l/min bei 1,000 bar 40,5 l/min bei 1,200 bar 26 l/min bei 1,600 bar 23,5 l/min bei 2,000 bar 18 l/min bei 2,800 bar
Drive power	125 kW
Diesel tank	200 l
Dimensions stationary without cover stationary with cover mobile with cover	2,500 x 1,400 x 1,835 mm 2,606 x 1,400 x 1,835 mm 3,925 x 1,400 x 1,835 mm
Dead weight stationary without cover stationary with cover mobile with cover	1,900 kg 2,000 kg 2.200 kg

Its compact size and its performance class make the JetPower 125 the ideal tool for smaller, delicate tasks. The mobile unit combines easy handling with highest productivity which makes it the professional unit for small and large companies. This combination of flexibility and quality is the entry level into the professional high pressure range.

Highlights

- Mobile compact unit for professional use
- Highly variable use, suitable for almost any task
- Sufficient power reserves on a very small footprint
- Flexible use from delicate tasks up to large area and removal work
- Excellent performance weight
- Total weight 2.2 tons. Carriage equipped with a standard ball coupling
- Large or small-scale consumer operation



Accessories

Standard accessories package

- 1x spray gun / spray lance
- 1x fan or point nozzle
- 1x remote control cable, 20m
- 1x rotating cleaning nozzle RWD
- 1x hose pipe, 20m length

Accessory package pipe/heat exchanger cleaning

- 1x foot valve / foot switch
- 1x flexible lance
- 1x pipe cleaning nozzle, fixed
- 1x pipe cleaning nozzle, rotating



Basic tools

- Spray gun SP
- Spray lances SL
- Flexible lances
- Fan nozzles
- Point nozzles
- High pressure hose pipe
- Foot valve FV



Protective clothing

- Ear protection
- Gloves
- Overalls
- Helmets
- Boots



Pipe cleaning tools

- Rotating cleaning heads RWK
- Pipe cleaning nozzle fixed/rotating
- Sewer cleaning nozzles



Remote control

- Remote control cable
- Radio remote control
- Foot switch
- Hand switch
- Cable drums



Special tools

- Robots
- Abrasive cutting heads
- Special tools customer-specific



Surface cleaning tools

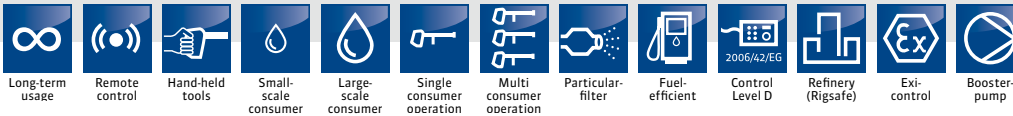
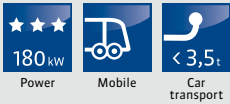
- Surface cleaning devices
- Hand-held surface cleaning devices HFL
- Nozzle beams
- Rotating cleaning nozzles RWD



Tank cleaning tools

- Tank cleaning heads TWK
- Small tank cleaners KBR

JetPower 180

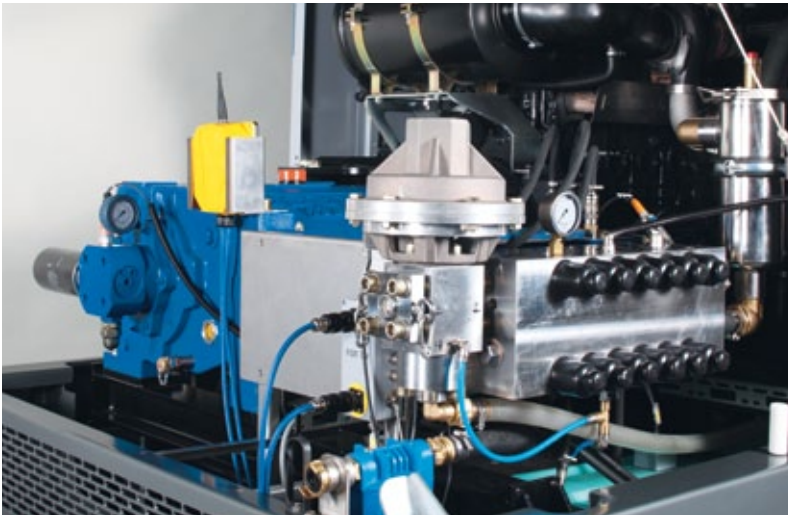


JetPower 180	
Pump type	KD724-G
Standard pressure stages	800/1,000/1,200/1,600/ 2,000/2,800/3,000 bar
Flow rate	104 l/min bei 800 bar 78 l/min bei 1,000 bar 63 l/min bei 1,200 bar 50 l/min bei 1,600 bar 40 l/min bei 2,000 bar 28 l/min bei 2,800 bar 25 l/min bei 3,000 bar
Drive power	180 kW
Diesel tank	280 l
Dimensions stationary without cover stationary with cover mobile with cover	3,000 x 1,600 x 1,811 mm 3,100 x 1,600 x 1,935 mm 4,670 x 2,070 x 2,210 mm
Dead weight stationary without cover stationary with cover mobile with cover	2,635 kg 2,755 kg 2,950 kg

The mobile JetPower 180 offers an unsurpassed ratio of high power to low weight. This makes it suitable for almost any application, it is easy to handle and can be transported with a suitable car.

Highlights

- Mobile compact unit for professional use
- Highly variable use, suitable for almost any task
- Sufficient power reserves on a very small footprint
- Flexible in use from delicate work up to large area and removal work
- Excellent capacity to weight ratio, unique on the market in this form
- Total weight less than 3.5 tons
- Carriage with standard passenger car ball-ended coupling (license category BE)
- Large and small-scale consumer operation as well as optional multi-consumer unit



Accessories

Standard accessories package

- 1x spray gun / spray lance
- 1x fan or point nozzle
- 1x remote control cable, 20m
- 1x rotating cleaning nozzle RWD
- 1x hose pipe, 20m length

Accessory package pipe/heat exchanger cleaning

- 1x foot valve / foot switch
- 1x flexible lance
- 1x pipe cleaning nozzle, fixed
- 1x pipe cleaning nozzle, rotating



Multi-consumer

- MultiGunUnit
- Mobile release unit



Basic tools

- Spray gun SP
- Spray lances SL
- Flexible lances
- Fan nozzles
- Point nozzles
- High pressure hose pipe
- Foot valve FV

Protective clothing

- Ear protection
- Gloves
- Overalls
- Helmets
- Boots



Pipe cleaning tools

- Rotating cleaning heads RWK
- Pipe cleaning nozzle fixed/rotating
- Sewer cleaning nozzles
- Lance cleaning equipment



Surface cleaning tools

- Surface cleaning devices
- Hand-held surface cleaning devices HFL
- Nozzle beams
- Rotating cleaning nozzles RWD



Remote control

- Remote control cable
- Radio remote control
- Foot switch
- Hand switch
- Cable drums



Special tools

- Robots
- Abrasive cutting heads
- Special tools customer-specific



Tank cleaning tools

- Tank cleaning heads TWK
- Small tank cleaners KBR



JetPower 300



Power

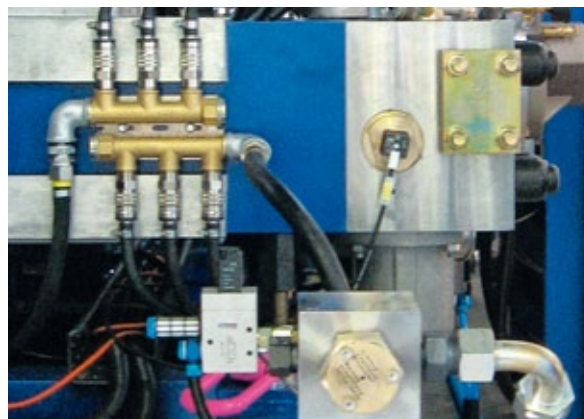
Long-term
usageRemote
controlHand-held
toolsLarge-
scale
consumerSingle
consumer
operationMulti
consumer
operationParticular-
filterFuel-
efficientControl
Level DRefinery
(Rigsafe)Exi-
controlBooster-
pump

JetPower 300	
Pump type	P3-70
Standard pressure stages	800/1,000/1,200/1,600/ 2,000/2,500/2,800 bar
Flow rate	224 l/min bei 800 bar 176 l/min bei 1,000 bar 133 l/min bei 1,200 bar 110 l/min bei 1,600 bar 82 l/min bei 2,000 bar 55 l/min bei 2,500 bar 42 l/min bei 2,800 bar
Drive power	353 kW
Diesel tank	560 l (optional) 900 l (optional)
Dimensions	3,500 x 1,500 x 2,000 mm
Dead weight	4,500 kg

Whether as a stationary installation in the container or mounted on an HGV – the JetPower 300 is a functional diesel unit that can meet almost any requirement. It features optimum power reserves and is ideal for use in industrial cleaning as well as for all areas of service.

Highlights

- Unit from the professional range
- Highly variable use, especially for large area tasks
- Large power reserves on a compact footprint
- Optional multi-consumer operation



Accessories



- **Multi-consumer**
 - MultiGunUnit
 - Mobile release unit



- **Basic tools**
 - Spray gun SP
 - Spray lances SL
 - Flexible lances
 - Fan nozzles
 - Point nozzles
 - High pressure hose pipe
 - Foot valve FV



- **Protective clothing**
 - Ear protection
 - Gloves
 - Overalls
 - Helmets
 - Boots



- **Pipe cleaning tools**
 - Rotating cleaning heads RWK
 - Pipe cleaning nozzle fixed/rotating
 - Sewer cleaning nozzles
 - Lance cleaning equipment



- **Surface cleaning tools**
 - Surface cleaning devices
 - Hand-held surface cleaning devices HFL
 - Nozzle beams
 - Rotating cleaning nozzles RWD



- **Remote control**
 - Remote control cable
 - Radio remote control
 - Foot switch
 - Hand switch
 - Cable drums



- **Special tools**
 - Robots
 - Abrasive cutting heads
 - Special tools customer-specific



- **Tank cleaning tools**
 - Tank cleaning heads TWK

JetPower 480



Power

Long-term
usageRemote
controlLarge-
scale
consumerSingle
consumer
operationMulti
consumer
operationParticular-
filterFuel-
efficientControl
Level DRefinery
(Rigsafe)Ex-
controlBooster-
pump

	JetPower 480
Pump type	P4-70
Standard pressure stages	800/1,000/1,200/1,600/ 2,000/2,500/2,800 bar
Flow rate	305 l/min bei 800 bar 238 l/min bei 1.000 bar 180 l/min bei 1.200 bar 152 l/min bei 1.600 bar 113 l/min bei 2.000 bar 73 l/min bei 2.500 bar 56 l/min bei 2.800 bar
Drive power	480/565 kW
Diesel tank	900 l (optional)
Dimensions	3,700 x 2,000 x 2,200 mm
Dead weight	4,600 kg

The JetPower 480 is ideally suited for cleaning large vessels or containers and for medium and heavy-duty removal tasks. The unit remains mobile whether mounted on an HGV or in a container. The high level of power and the convincing flexibility despite the size make the JetPower 480 an ideal solution for any application in the high pressure sector.

Highlights

- High pressure unit from the professional range
- Highly variable use, especially suitable for medium to heavy-duty tasks
- Large power reserves on a compact footprint
- Optimum performance weight and flexible design (stationary or on an HGV)
- Large-scale consumer operation with optional multi-consumer unit



Accessories



- Multi-consumer
- MultiGunUnit



- Basic tools
- Flexible lances
- Fan nozzles
- Point nozzles
- High pressure hose pipe
- Foot valve FV



- Protective clothing
- Ear protection
- Gloves
- Overalls
- Helmets
- Boots



- Pipe cleaning tools
- Rotating cleaning heads RWK
- Pipe cleaning nozzle fixed/rotating
- Sewer cleaning nozzles
- Lance cleaning equipment



- Surface cleaning tools
- Surface cleaning devices
- Nozzle beams
- Rotating cleaning nozzles RWD



- Special tools
- Robots
- Special tools customer-specific

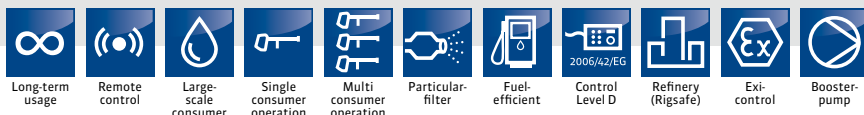
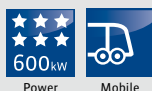


- Tank cleaning tools
- Tank cleaning heads TWK



- Remote control
- Remote control cable
- Radio remote control
- Foot switch
- Hand switch
- Cable drums

JetPower 600

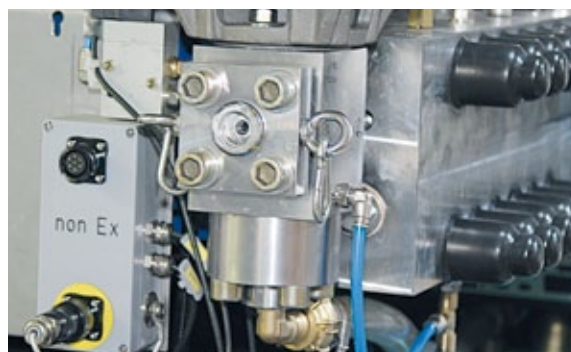
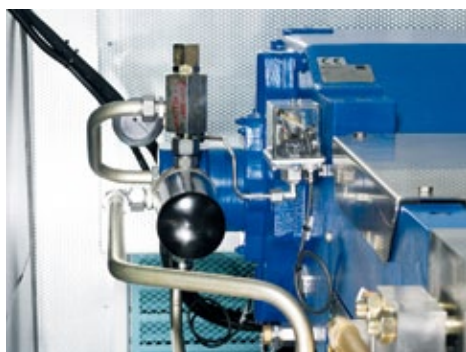


JetPower 600	
Pump type	P5-70
Standard pressure stages	800/1,000/1,200/1,600/ 2,000/2,500/2,800 bar
Flow rate	381 l/min bei 800 bar 297 l/min bei 1,000 bar 255 l/min bei 1,200 bar 190 l/min bei 1,600 bar 141 l/min bei 2,000 bar 91 l/min bei 2,500 bar 70 l/min bei 2,800 bar
Drive power	565 kW
Diesel tank	900 l (optional)
Dimensions	4,200 x 2,000 x 2,200 mm
Dead weight	5,600 kg

The JetPower 600 is an absolute high performance unit. This professional unit is in the right place wherever large surfaces have to be treated or cleaning tasks require a high level of power.

Highlights

- High pressure unit from the top range
- Highly variable use, suitable for almost any task
- Sufficient power reserves on a compact footprint
- Excellent performance weight, flexible mounting options, e.g. as a container structure or mounted on an HGV
- Large-scale consumer operation with optional multi-consumer unit



Accessories



- Multi-consumer
- MultiGunUnit



- Basic tools
- Flexible lances
- Fan nozzles
- Point nozzles
- High pressure hose pipe
- Foot valve FV



- Protective clothing
- Ear protection
- Gloves
- Overalls
- Helmets
- Boots



- Pipe cleaning tools
- Rotating cleaning heads RWK
- Pipe cleaning nozzle fixed/rotating
- Sewer cleaning nozzles
- Lance cleaning equipment



- Surface cleaning tools
- Surface cleaning devices
- Nozzle beams
- Rotating cleaning nozzles RWD



- Special tools
- Robots
- Special tools customer-specific



- Tank cleaning tools
- Tank cleaning heads TWK



- Remote control
- Remote control cable
- Radio remote control
- Foot switch
- Hand switch
- Cable drums

URACA – professional **high pressure** system supplier



Products and services

— Pump units

Unit assembly and drives at your convenience in stationary or mobile design. Whether in container, on skid or on trailer.

- Electrically driven units
- **Engine driven units**
- Hydraulically driven units
- Tailor made pump control systems

— Pumps

The core of the URACA technology: Superior quality, powerful high pressure positive displacement pumps, also for high-demanding continuous use. URACA pumps are designed acc. to API 674 on demand.

- Process and industrial pumps – reciprocating plunger pump or diaphragm design
- Test pumps
- High pressure water jetting pumps
- Sewer cleaning pumps



— High pressure water jetting systems

URACA gathered a lot of experience and engineering competence in the field of water jetting. URACA designs and manufactures complete systems, from simple cleaning head positioning devices up to semi-automatic and automatic operated systems for

- Reactor and vessel cleaning
- Pipe and tube cleaning
- Surface conditioning
- And others – just give us your request!

— Tools

URACA manufactures a wide range of cleaning tools for any application.

- Spray guns
- Tank cleaning heads
- Sewer cleaning nozzles
- Rotating nozzles
- Floor cleaners

— Accessories and components

URACA's pump range is completed with a wide range of high pressure accessories and components, like

- Nozzles
- Remote controls
- Hoses
- High pressure valves
- 90 degree rotary joint
- Multi-consumer systems
- Resonators and pulsation dampers

— Service

After sales service is URACA's top priority. The qualified and specially trained personnel and technicians are prepared to support you at any time, whether for

- Spare parts
 - Revamps
 - Upgrades in case of changed process conditions
 - Training
 - Supervising
 - Or answers to any questions you may have in terms of URACA equipment
- Please do not hesitate to contact us!