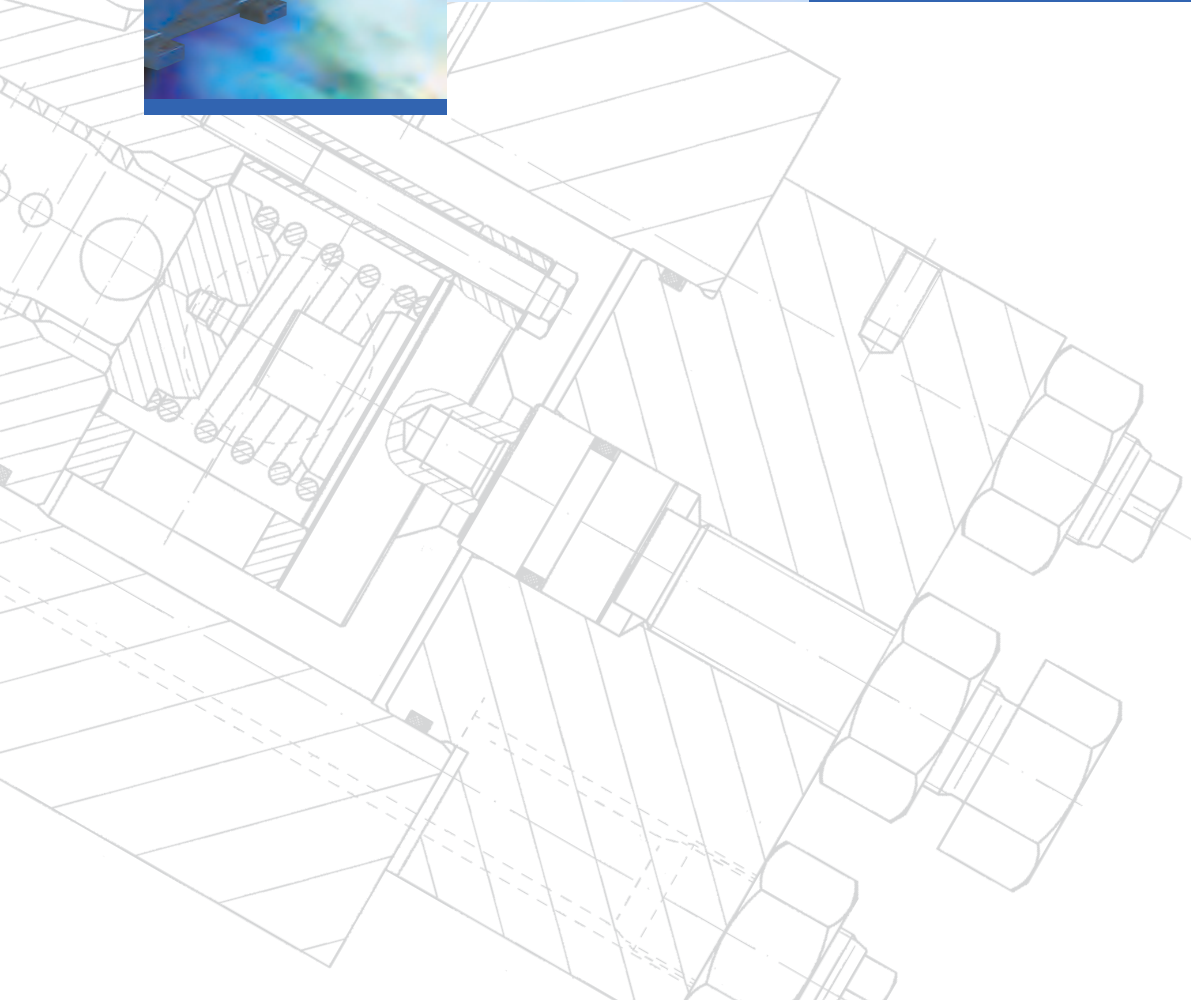
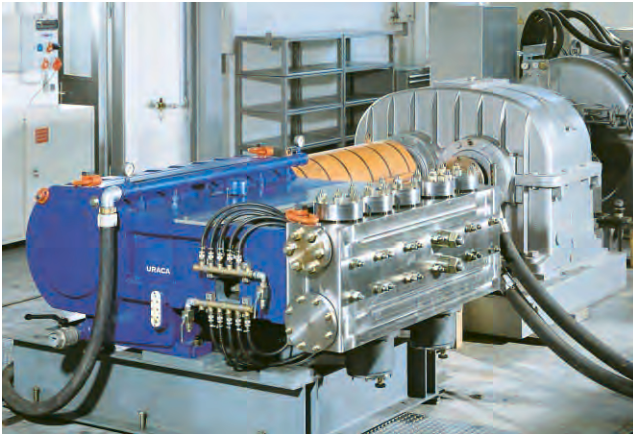


High Pressure Plunger Pumps P3-80 P5-80 P7-80



Pumps for the future



Advantages at a glance

- Low space requirement thanks to compact design
- Good power-to-weight ratio thanks to optimum material use
- High availability
- Low operating costs
- Time-proven URACA quality
- Minimal pressure pulsation

A series incorporating modern design for the performance range up to approx. 1,600 kW in round-the-clock, continuous duty.

The performance range of the series is subdivided into three groups:

- P 3-80 (3 plungers)
- P 5-80 (5 plungers)
- P 7-80 (7 plungers)

All power ends feature force-feed lubrication and oil cooling. Innovative monitoring systems ensure high operational reliability.

The number of different components has been reduced to a minimum. Connecting rod load and stroke, in addition to all power end internal components with the exception of the crankshaft, are identical on all models.

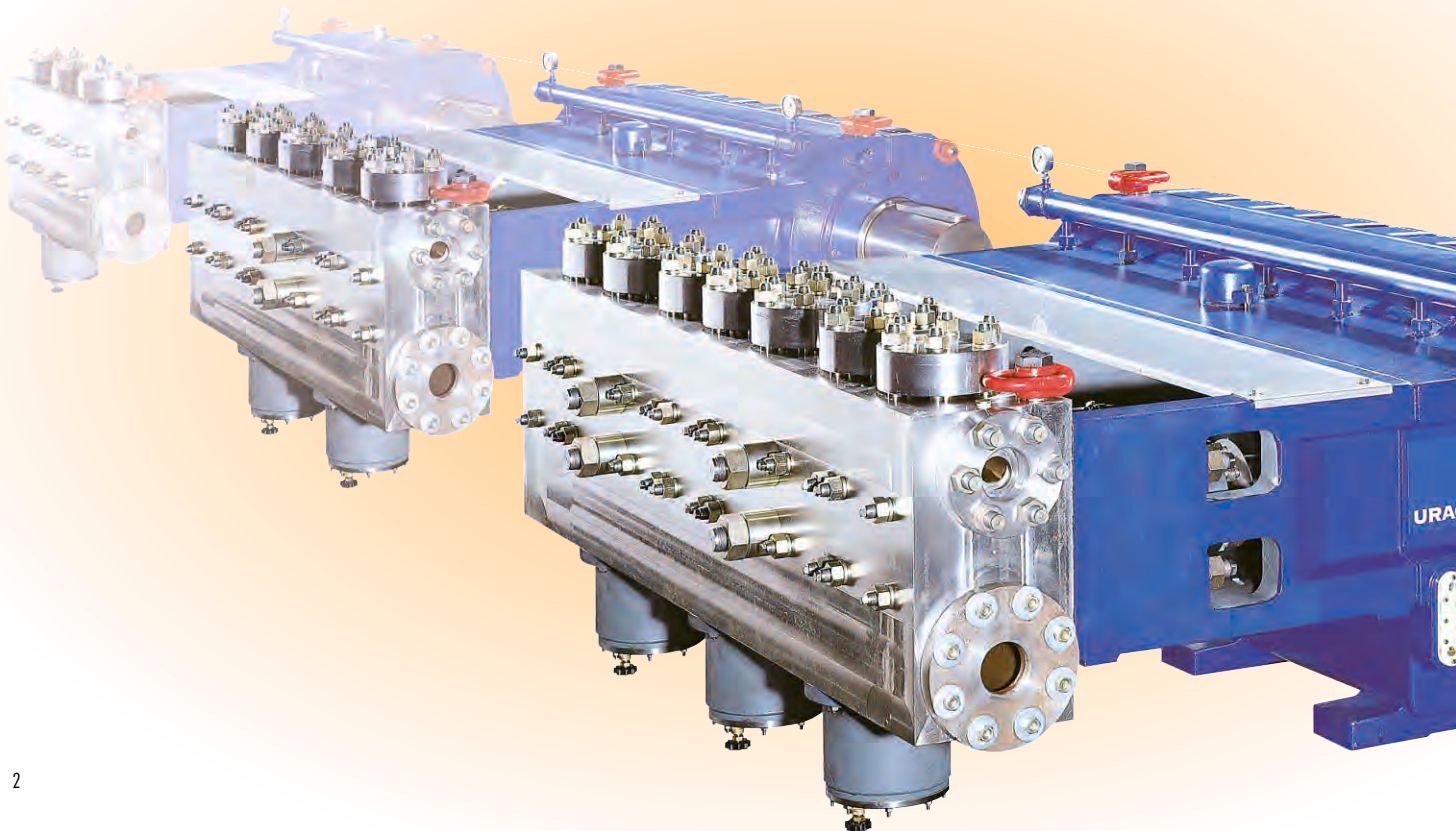
The liquid ends are also standardised accordingly, i.e. valve blocks and stuffing boxes. Here as well, reducing the number of different parts has provided a cost-optimised solution.

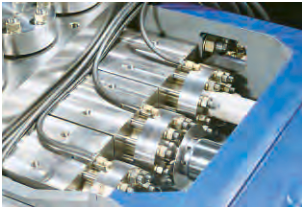
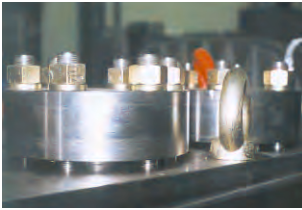
The process and industrial pumps P3-80, P5-80 and P7-80 have been designed for all conceivable pumping tasks in the range of high and ultra-high pressures:

- Low-viscosity to pasty
- Alkaline to acidic
- Neutral to toxic
- Clean to abrasive

Fields of application at a glance

- The chemical industry
- Petrochemical installations
- Oil and gas production
- The steel industry
- The textile industry
- The foodstuff industry

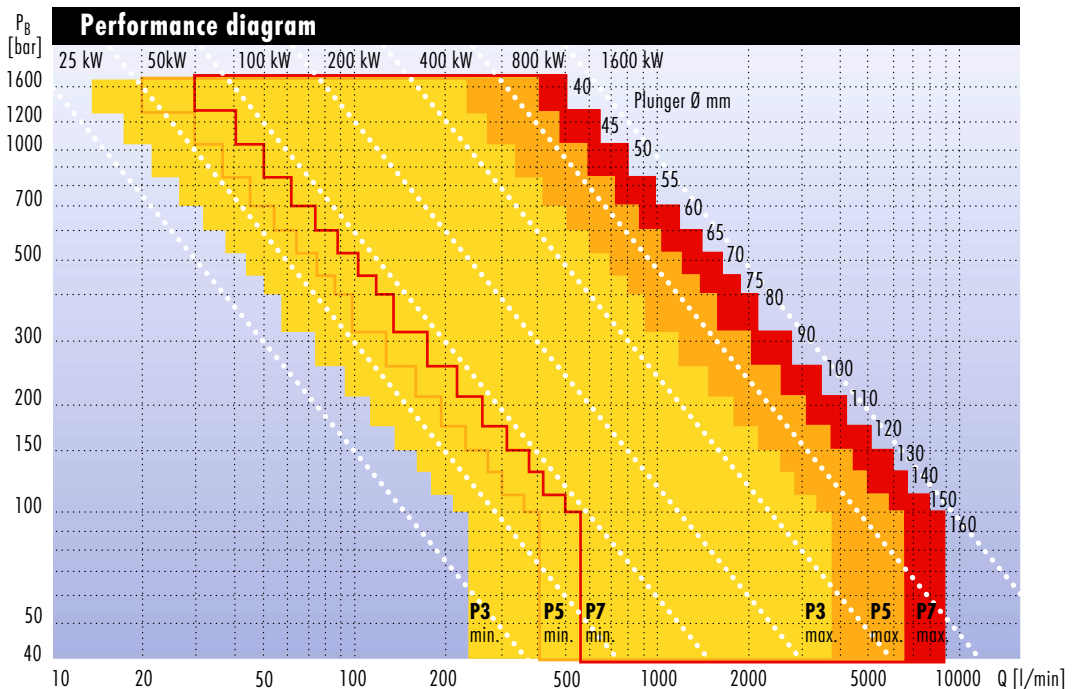
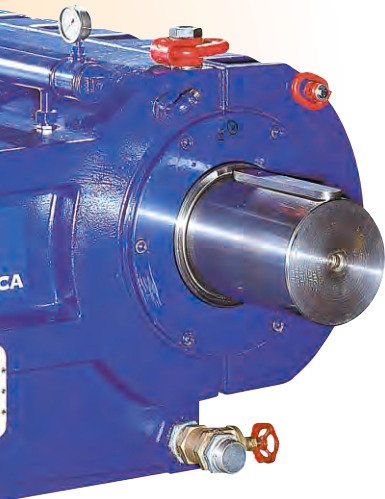




Technical data			P3		P5		P7	
Model			P3-80		P5-80		P7-80	
Number of plungers			3		5		7	
Stroke			160 mm		160 mm		160 mm	
Speed range			min. 25, max. 400		min. 25, max. 400		min. 25, max. 400	
Drive power, max. (400 rpm)			680 kW		1140 kW		1600 kW	
Drive power per 100 rpm			approx. 170 kW		approx. 285 kW		approx. 400 kW	
Reference speed			100 rpm		100 rpm		100 rpm	
Pressure [bar]	Pressure [psi]	Plunger Ø [mm]	Q [l/min]	Q [USGAL/m]	Q [l/min]	Q [USGAL/m]	Q [l/min]	Q [USGAL/m]
100	1445	160	945	250	1575	416	2210	585
110	1640	150	830	219	1385	365	1935	510
130	1885	140	720	191	1200	318	1685	445
150	2190	130	620	164	1035	273	1450	383
175	2560	120	530	139	880	232	1230	325
210	3050	110	442	117	735	195	1030	273
255	3690	100	365	97	610	161	850	225
315	4560	90	295	78	492	130	690	182
400	5750	80	233	62	388	103	545	144
450	6550	75	206	54	344	91	481	127
520	7550	70	179	47	299	79	418	110
600	8750	65	154	41	256	68	359	95
700	10250	60	130	34	217	57	304	80
840	12200	55	109	29	182	48	254	67
1020	14750	50	90	24	149	39	209	55
1250	18250	45	72	19	120	32	167	44
1600	23100	40	55	15	92	24	129	34

The delivery rates specified apply to water at a reference speed of 100 rpm. Volumetric and mechanical efficiencies have been allowed for in these figures. The actual speed must be allowed for during design.

Subject to technical modification.

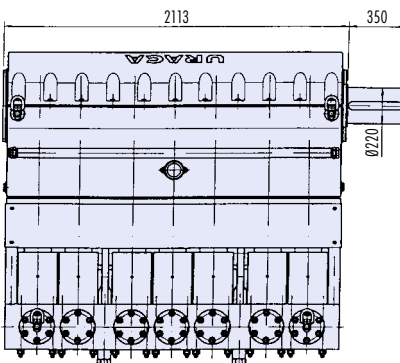
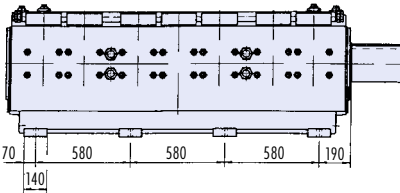
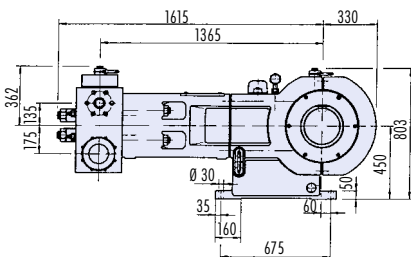
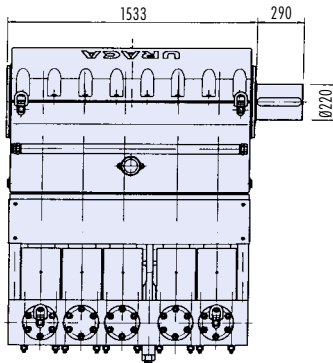
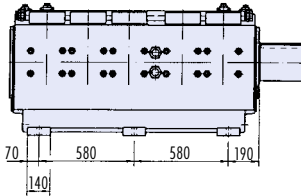
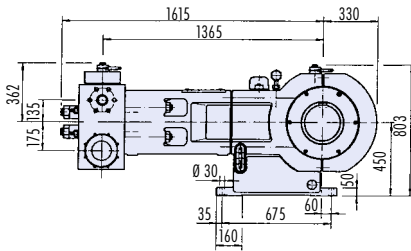
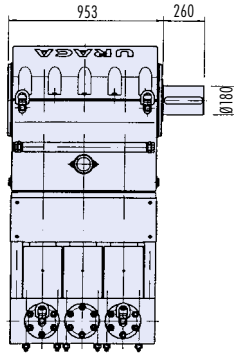
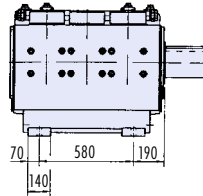
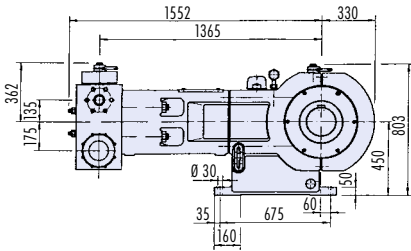


Dimensions and weights

URACA



USA & CANADA Toll Free 1-800-217-8677
 Tel. 201-934-3300 Fax 201-327-8861
 123 Pleasant Avenue, Upper Saddle River, NJ
 07458 USA (HQ URACA Service Center)
 E-mail Chemac@chemacinc.com
www.uraca.de or www.chemacinc.com



Weight		kg
P3		3010
P5		4950
P7		6830